



Make your impact with ideas
Accelerate your transformation and create your future

Deloitte thrives on its ability to attract future talent – like YOU – with the attitude and attributes to make an impact that matters in our multidisciplinary model.



Campus recruitment for 2022 intern opportunities at Deloitte Consulting is now live!

As an outstanding 2022 graduate with the desire to excel, embrace this opportunity and make your application now!

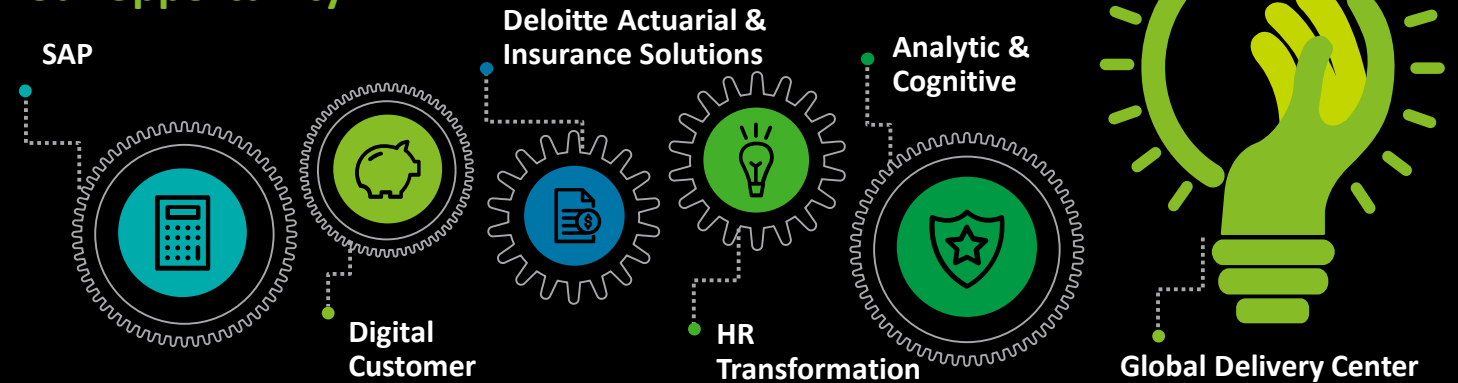
- [Intern, SAP](#)
- [Intern, Deloitte Actuarial & Insurance Solutions](#)
- [Intern, Digital Customer](#)
- [Intern, HR Transformation](#)
- [Intern, Global Delivery Center](#)
- [Intern, Analytic & Cognitive](#)



We want YOU

Attracting top talent is how we've made an impact that matters since 1845. We welcome YOU – a bright, inquisitive, innovative 2022 graduate from any discipline. Together, we'll shape a new era of rapid technological change and transformation.

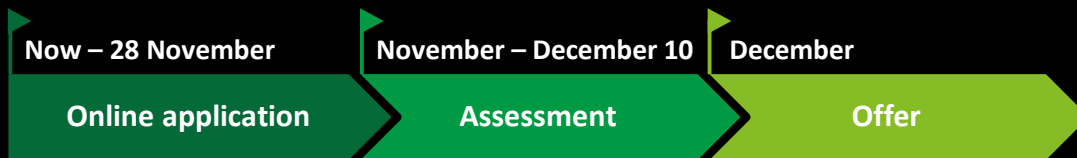
Your opportunity



The recruitment process

To know more about the opportunities, please scan the QR code to visit our career website at: <https://reurl.cc/35m9b8>

104 Career Page



Make your impact with us – Join Deloitte and create the digital future



For enquiries: please email

deloitte@hrbank.net for account registration;

hrtw@deloitte.com for applications/interview arrangements

Or reach us at

02-6616-1713 Or 1710

About Deloitte

Deloitte refers to one or more of Deloitte Touche Tohmatsu Limited (“DTTL”), its global network of member firms, and their related entities (collectively, the “Deloitte organization”). DTTL (also referred to as “Deloitte Global”) and each of its member firms and related entities are legally separate and independent entities, which cannot obligate or bind each other in respect of third parties. DTTL and each DTTL member firm and related entity is liable only for its own acts and omissions, and not those of each other. DTTL does not provide services to clients. Please see www.deloitte.com/about to learn more.

Deloitte is a leading global provider of audit and assurance, consulting, financial advisory, risk advisory, tax and related services. Our global network of member firms and related entities in more than 150 countries and territories (collectively, the “Deloitte organization”) serves four out of five Fortune Global 500® companies. Learn how Deloitte’s approximately 330,000 people make an impact that matters at www.deloitte.com.

Deloitte Asia Pacific Limited is a company limited by guarantee and a member firm of DTTL. Members of Deloitte Asia Pacific Limited and their related entities, each of which are separate and independent legal entities, provide services from more than 100 cities across the region, including Auckland, Bangkok, Beijing, Hanoi, Hong Kong, Jakarta, Kuala Lumpur, Manila, Melbourne, Osaka, Seoul, Shanghai, Singapore, Sydney, Taipei and Tokyo.

This communication contains general information only, and none of Deloitte Touche Tohmatsu Limited (“DTTL”), its global network of member firms or their related entities (collectively, the “Deloitte organization”) is, by means of this communication, rendering professional advice or services. Before making any decision or taking any action that may affect your finances or your business, you should consult a qualified professional adviser.

No representations, warranties or undertakings (express or implied) are given as to the accuracy or completeness of the information in this communication, and none of DTTL, its member firms, related entities, employees or agents shall be liable or responsible for any loss or damage whatsoever arising directly or indirectly in connection with any person relying on this communication. DTTL and each of its member firms, and their related entities, are legally separate and independent entities.